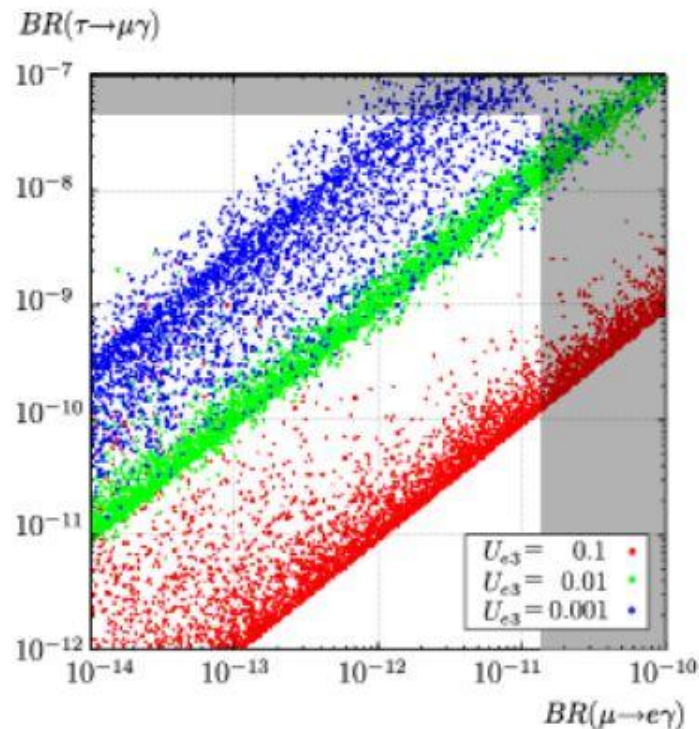
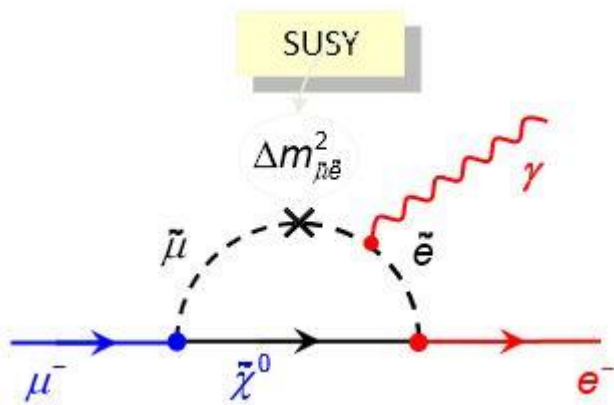
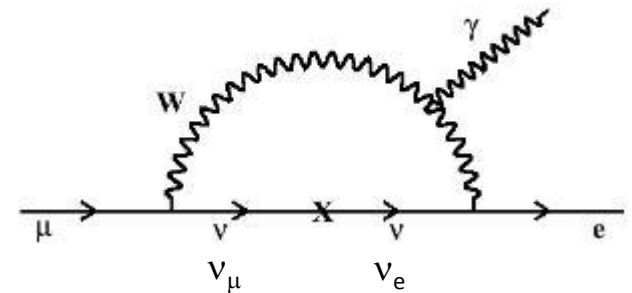


# Iskanje razpadov $\mu^+ \rightarrow e^+ \gamma$

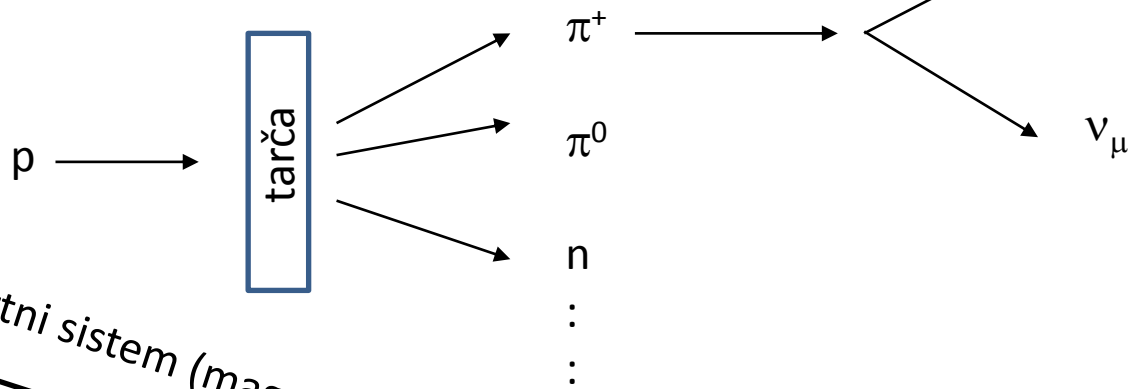
prepovedan v Standardnem modelu (SM) elektromagnetne, šibke in močne interakcije, zaradi  $\Delta L \neq 0$  (razen preko t.i. nevtrinskih oscilacij,  $B \sim 10^{-55}$ )

možen v drugih – eksperimentalno nepreverjenih teorijah (npr. supersimetrične teorije):

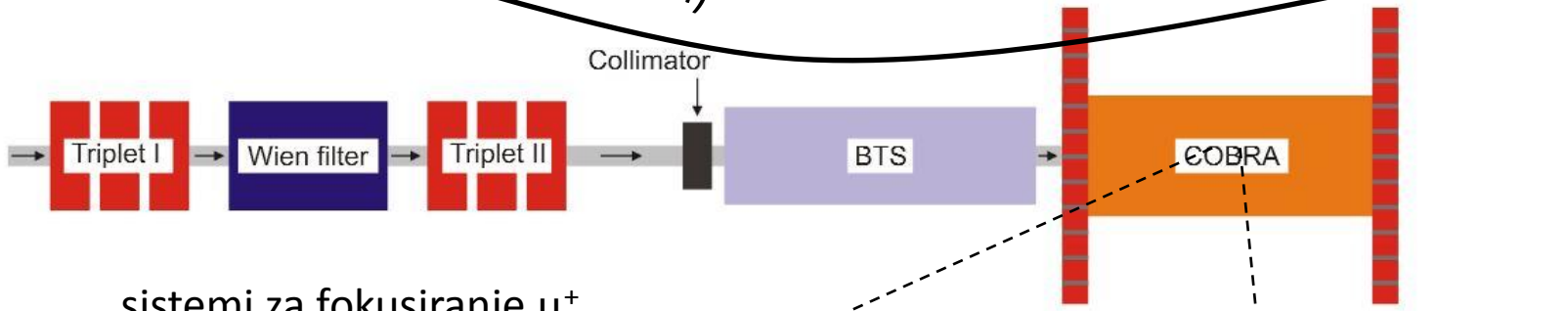


# Iskanje razpadov $\mu^+ \rightarrow e^+ \gamma$

Paul Sherrer Institute:

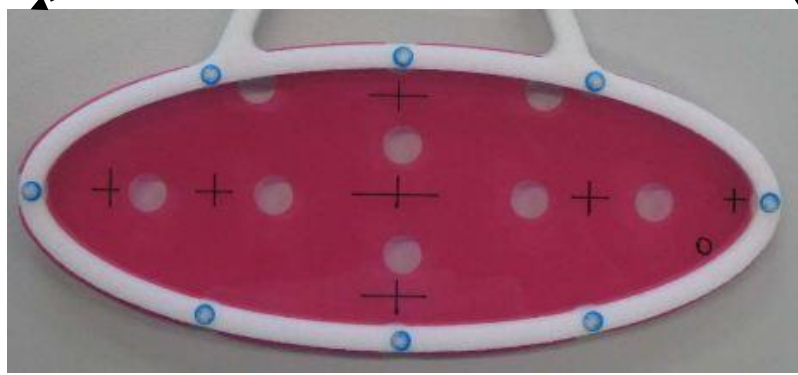


transportni sistem (magneti)

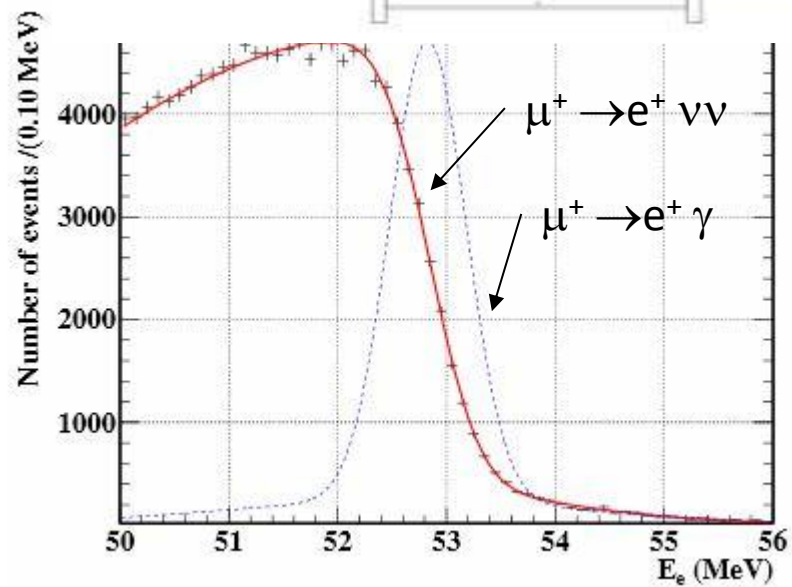
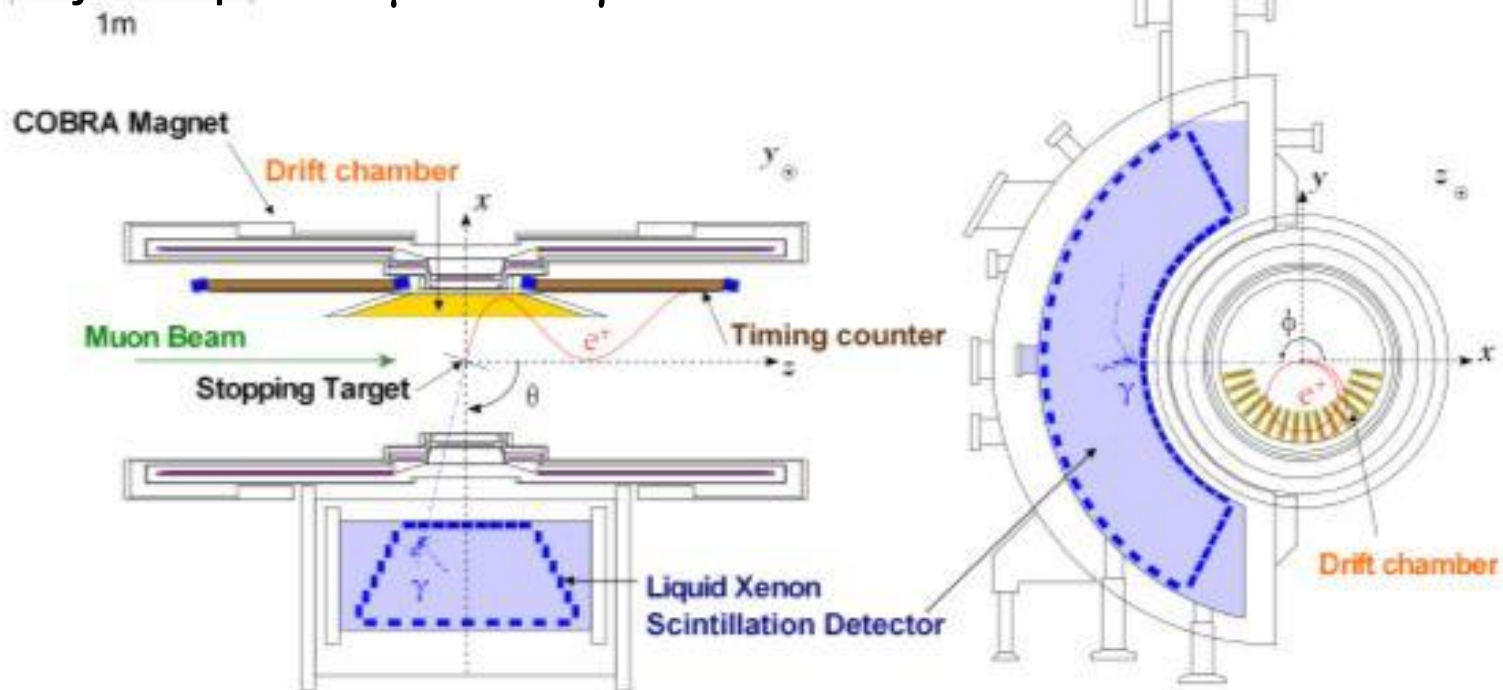


sistemi za fokusiranje  $\mu^+$

tarča iz polietilena, v kateri se  $\mu^+$  zaustavijo ( $10^8 \mu^+ / s$ )



# Iskanje razpadov $\mu^+ \rightarrow e^+ \gamma$



$$B(\mu^+ \rightarrow e^+ \gamma) / B(\mu^+ \rightarrow e^+ \nu \nu) \leq 10^{-12}$$