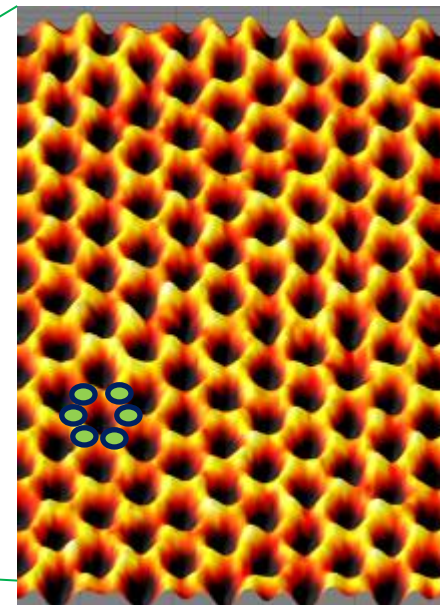
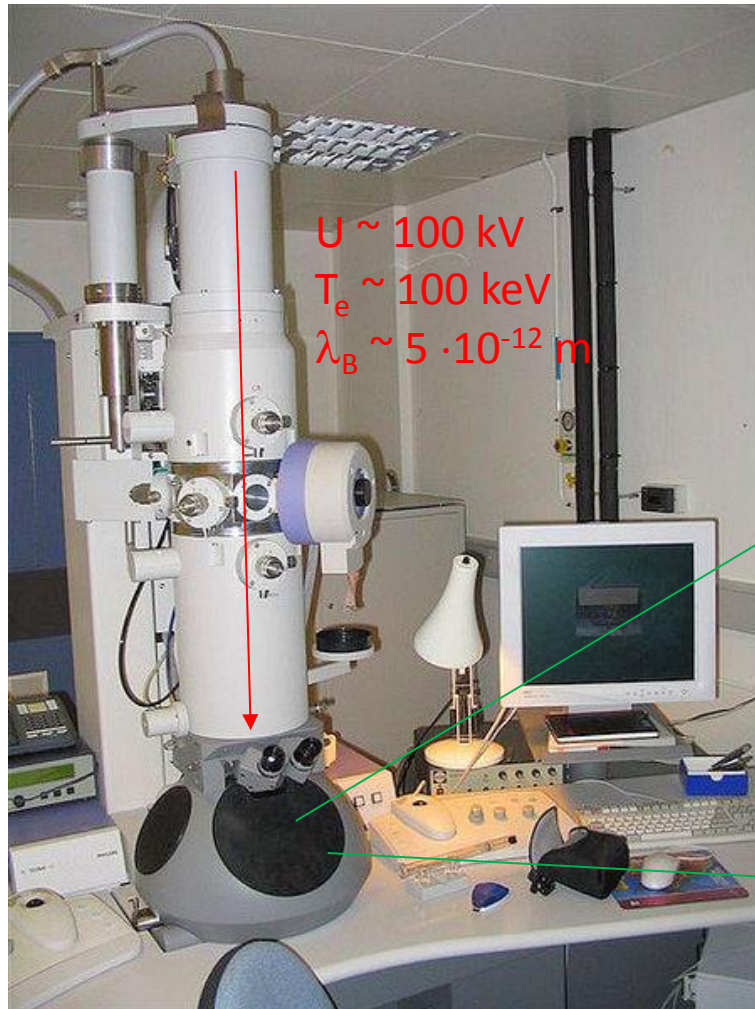
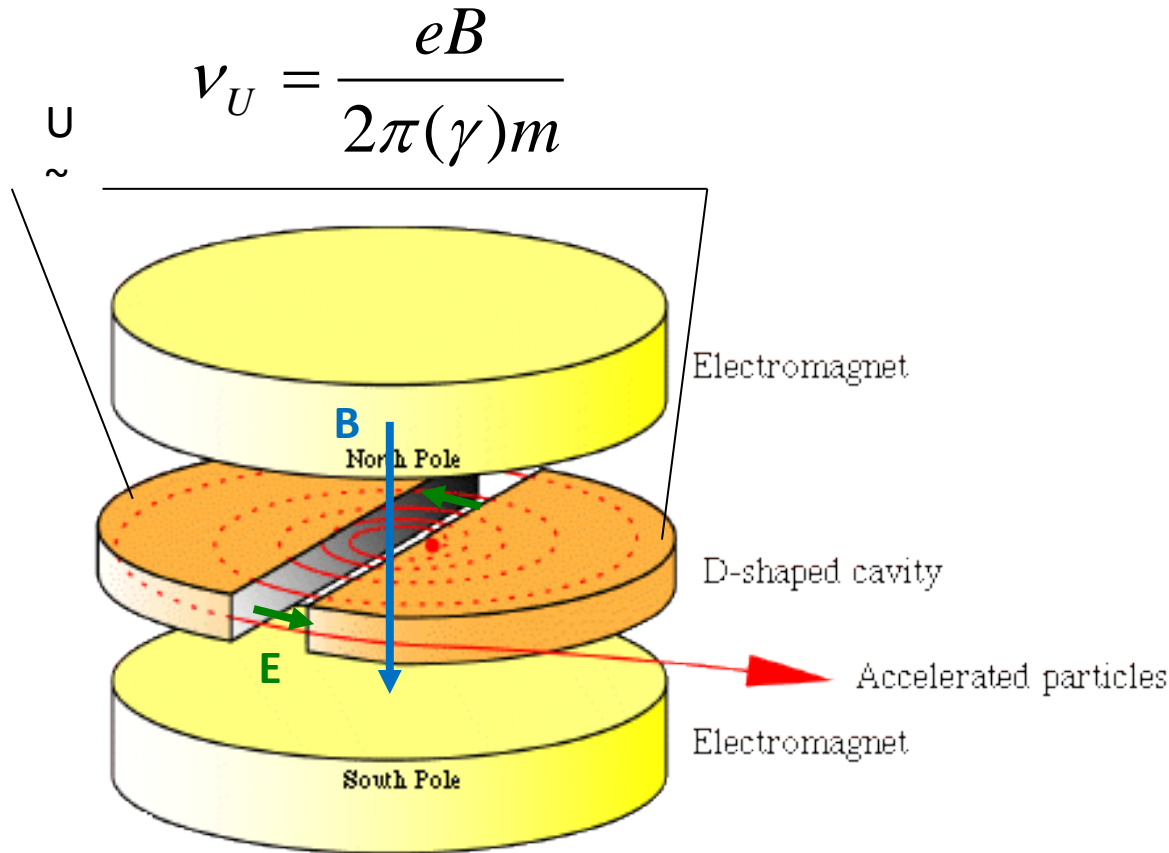


Pospešeni nabiti delci elektronski mikroskop



grafen – atomi C

Pospešeni nabiti delci (sinhro)ciklotron



E. Lawrence, Nobelova nagrada za ciklotron I. 1939 (eden od dveh prejemnikov Nobelove nagrade za pospeševalnike; drugi je Simon van der Meer, I. 1984);

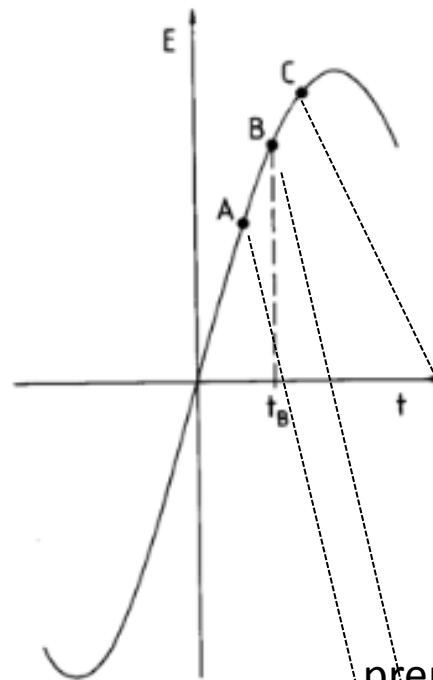
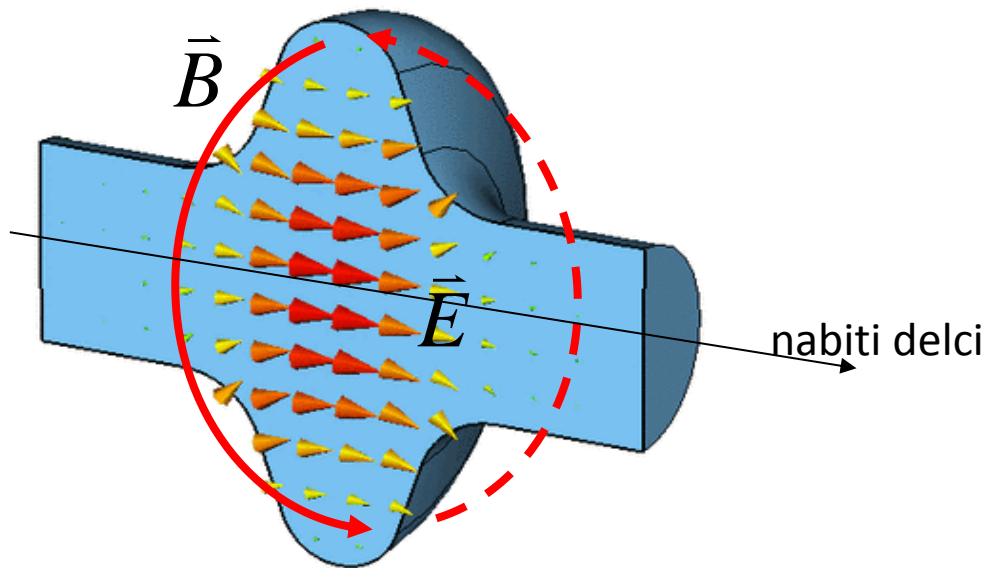
patent za ciklotron je pripisal Research Corporation for Science Advancement (RCSA);

direktor Radiation Laboratory na University of California

Pospešeni nabiti delci

krožni trkalniki

radio frekvenčni (RF) resonator



prepočasni delci
se močneje
pospešijo

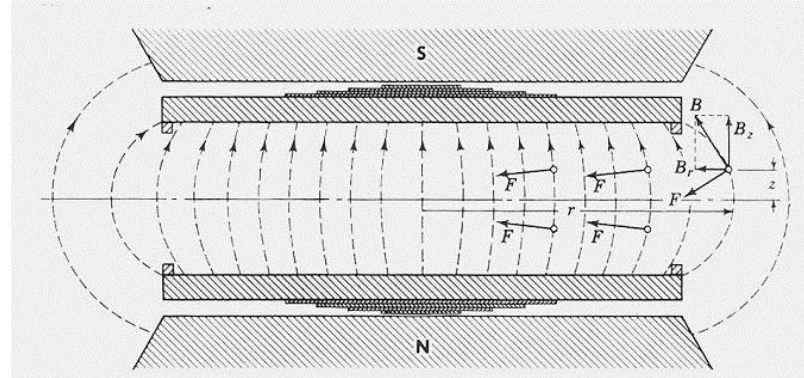
nominalno
pospeševanje

prehitri delci
se manj
pospešijo

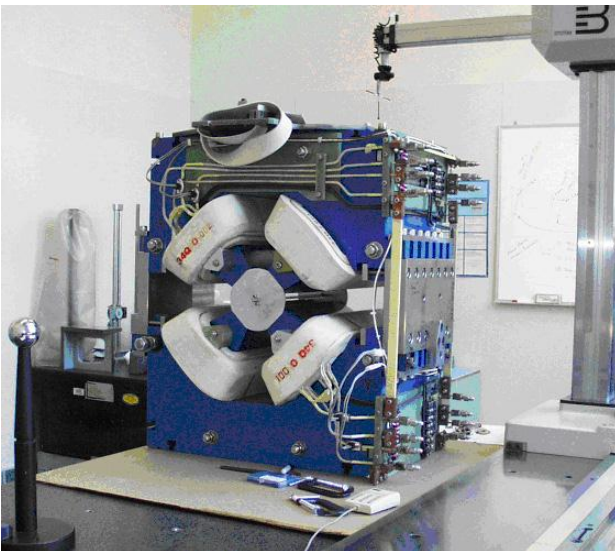


Pospešeni nabiti delci

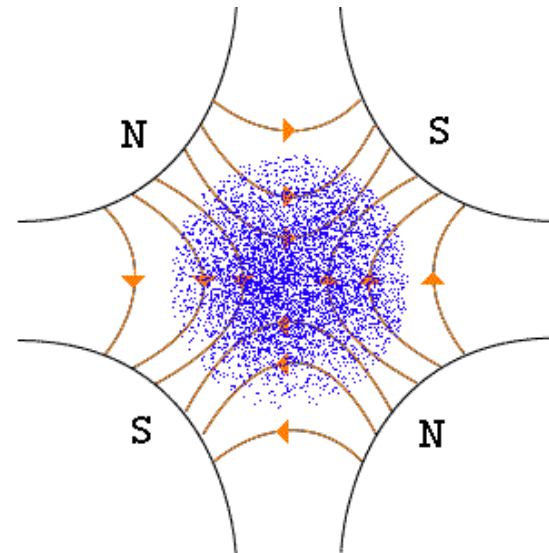
krožni trkalniki



dipolni magneti za LHC

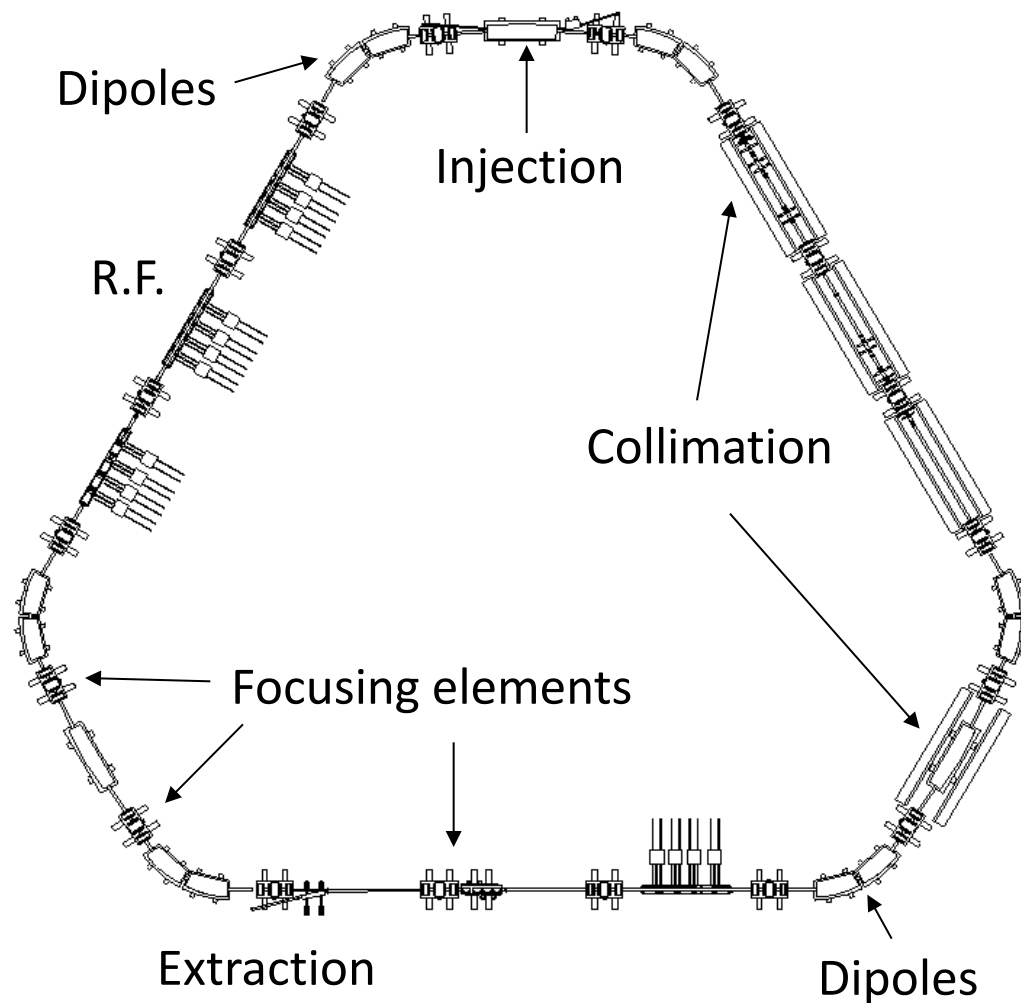


kvadrupolni magnet

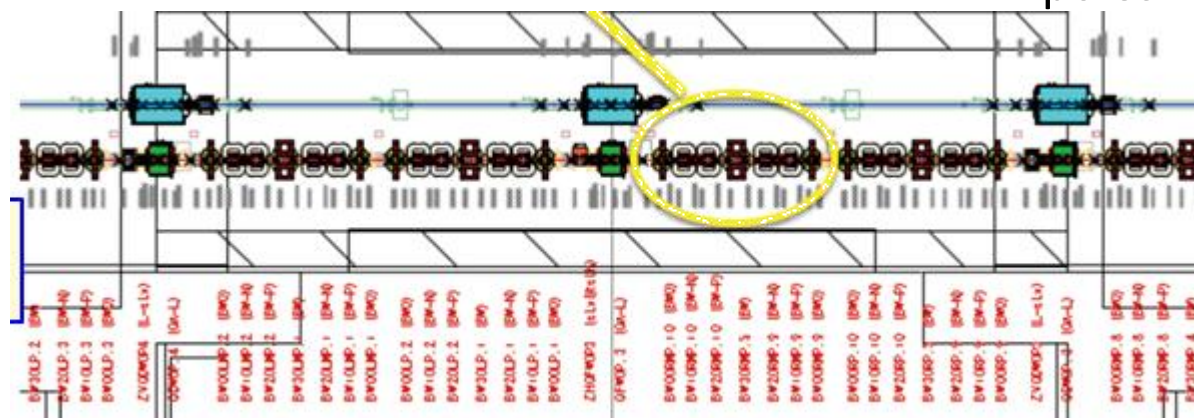


Pospešeni nabiti delci
krožni trkalniki

primer (preproste) mreže
trkalnika (CERN Super Proton
Synchrotron)

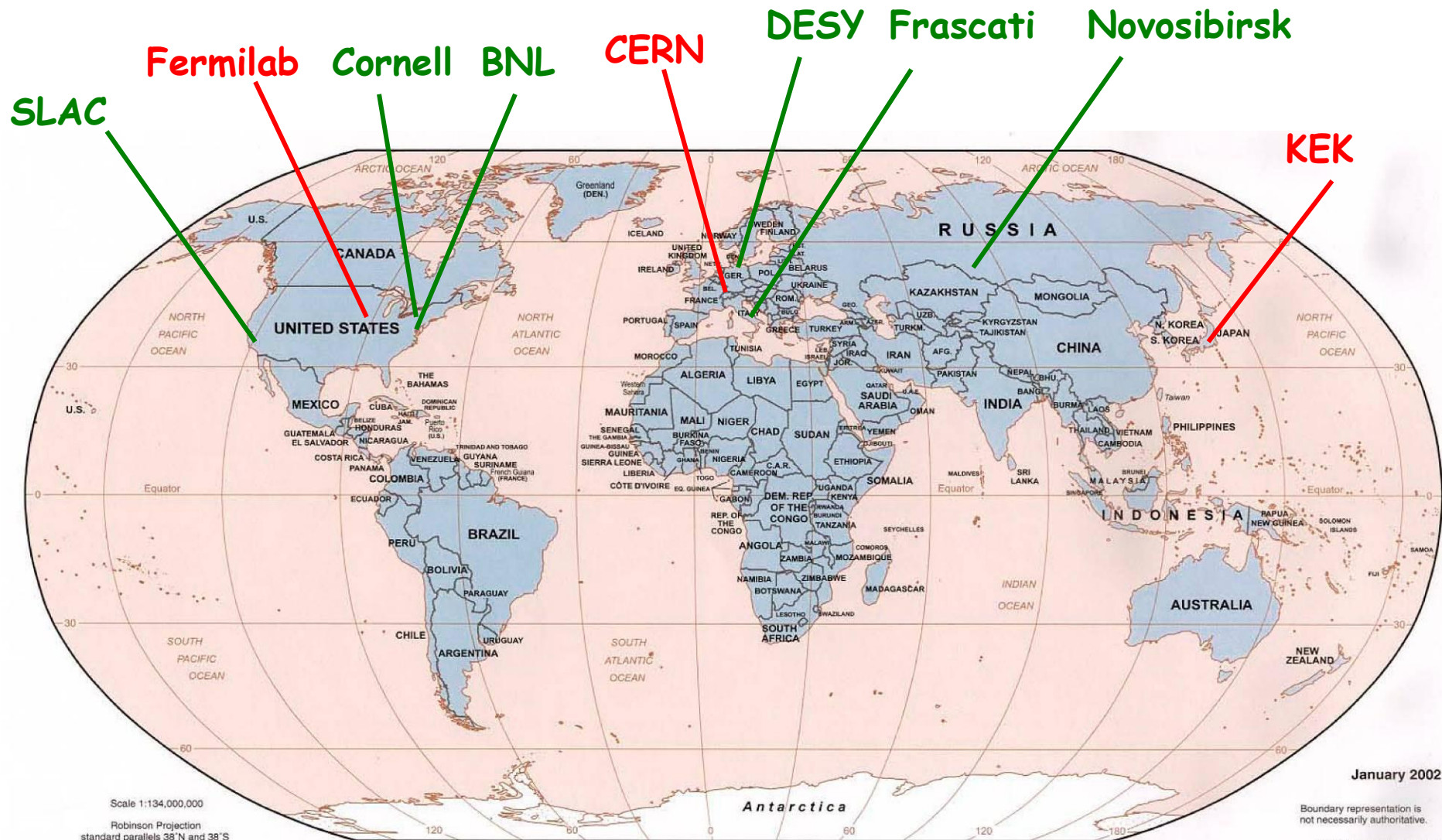


primer (dela) zapletenejšje
mreže (SuperKEKB)



Pospešeni nabiti delci

laboratoriji z večjimi pospeševalniki (znanstvenimi)



Scale 1:134,000,000
Robinson Projection
standard parallels 38° N and 38° S

January 2002

Boundary representation is
not necessarily authoritative.

802804A1 (R00352) 12-01

Pospešeni nabiti delci

CERN

