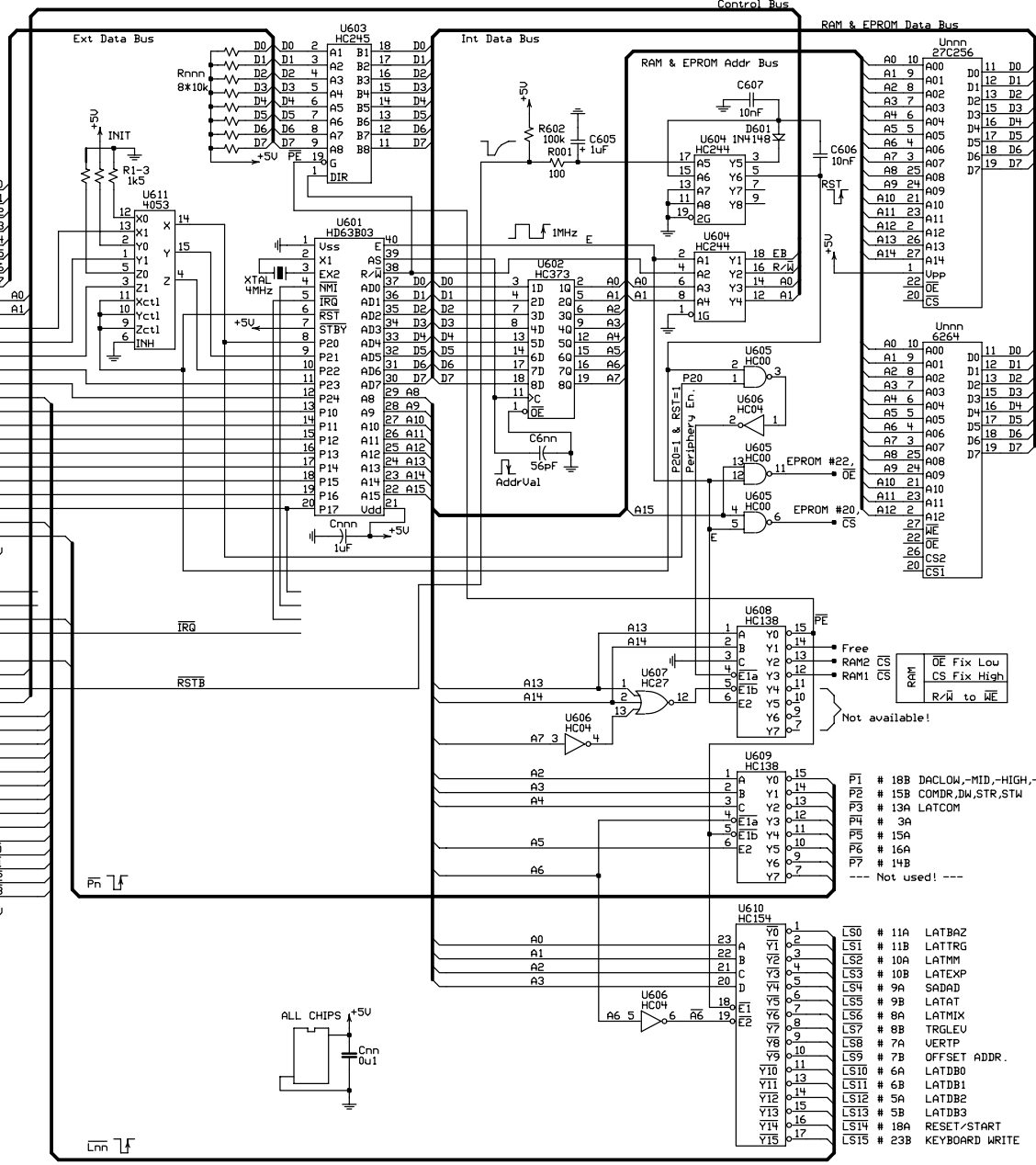


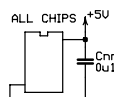
System Bus

Power Supply GND -#32A
 Power Supply GND -#32B
 Power Supply +5U -#31A
 Power Supply +5U -#31B

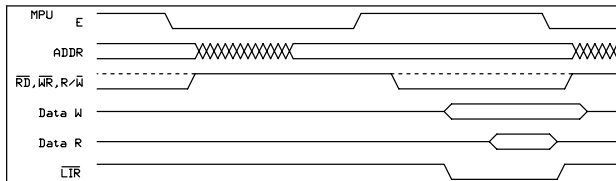
D0-#30A D0
 D1-#30B D1
 D2-#29A D2
 D3-#29B D3
 D4-#28A D4
 D5-#28B D5
 D6-#27A D6
 D7-#27B D7
 A0-#26A A0
 A1-#26B A1
 P20-#25A P20
 P21-#25B P21
 P22-#24A P22
 P23-#24B P23
 P24-#23A P24
 P24-#23A P24
 P10-#22A P10
 P11-#22B P11
 P12-#21A P12
 P13-#21B P13
 P14-#20A P14
 P15-#20B P15
 P16-#19A P16
 P17-#19B P17
 P17-#19B P17
 P1-#18B P1
 P2-#17A P2
 P2-#17B P2
 P2-#17B P2
 P2-#16A P2
 P2-#16B P2
 P2-#15A P2
 P2-#15B P2
 P3-#14A P3
 P3-#14B P3
 P3-#13A P3
 P3-#13B P3
 P3-#12A P3
 P3-#12B P3
 P3-#11A P3
 P3-#11B P3
 P3-#10A P3
 P3-#10B P3
 P3-#9A P3
 P3-#9B P3
 P3-#7A P3
 P3-#7B P3
 P3-#6A P3
 P3-#6B P3
 P3-#5A P3
 P3-#5B P3
 P4-#4A P4
 P4-#4B P4
 P4-#3A P4
 P4-#3B P4
 P4-#2A P4
 P4-#2B P4
 P4-#1A P4
 P4-#1B P4



Power Supply +12U -#17A
 Power Supply +12U -#17B
 (-5U ADC) A2-#16A
 -#16B
 -#15A
 -#15B
 IRQ -#14A
 -#14B
 -#13A
 -#13B
 -#12A
 -#12B
 -#11A
 -#11B
 -#10A
 -#10B
 -#9A
 -#9B
 -#7A
 -#7B
 -#6A
 -#6B
 -#5A
 -#5B
 Power Supply -12U -#4A
 Power Supply -12U -#4B
 -#3A
 -#3B
 PIP -#3A
 PIP -#3B
 Power Supply +5U -#2A
 Power Supply +5U -#2B
 Power Supply GND -#1A
 Power Supply GND -#1B



BUS Timing at 1MHz

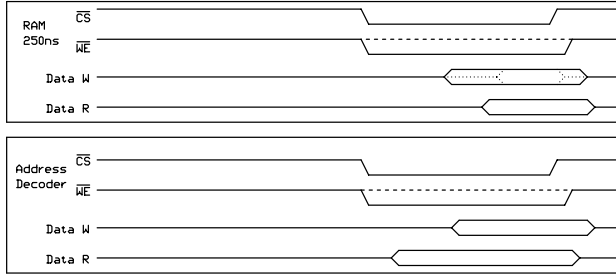


ADDRESS DECODER	A15	A14	A13
ADDR : \$8000 - \$FFFF	1	X	X
ADDR : \$6000 - \$7FFF	0	1	1
ADDR : \$4000 - \$5FFF	0	1	0
ADDR : \$2000 - \$3FFF	0	0	1
ADDR : \$0000 - \$1FFF	0	0	0

ADDRESS DECODER	A7	A6	A5	A4
ADDR : \$0020 - \$003F	0	0	1	X
ADDR : \$0040 - \$006F	0	1	0	X

Address Space

TEST Trigger ON (0)	#	Address	Size	Type
---	Not used!	---	---	---
HD Ready	# 21A	P12	32 Bytes	External Pn
9th ADDR, HD	# 21B	P13	32 Bytes	External Pn
Keyboard bit 0	# 20A	P14	16 Bytes	External Csn
Keyboard bit 1	# 20B	P15	16 Bytes	External Csn
Keyboard bit 2	# 19A	P16	16 Bytes	External Csn
Keyboard bit 3 + NMI	# 19B	P17	16 Bytes	External Csn
INT EPROM Enable (1)	# 25A	P20	128 Bytes	Internal RAM
TEST EOS (TIMER)	# 25B	P21	16k-256 Bytes	Not used
INT NMI->IRQ	# 24A	P22	16k Bytes	External RAM
TEST CONU. (NM)	# 24B	P23	16k Bytes	External RAM
INT Disable NMI	# 23A	P24	32k Bytes	External ROM



Institut Jožef Stefan, Ljubljana

projekt/naloga : **Iskrascope LCD**

sestavni del : **Mikroprocesor**

priporočila : tolerance uporov 5 %
 tolerance kondenzatorjev 20 %

načrtoval : E. Margan
 risal : E. Margan
 datum : 1987.05.23.
 list : 1/1
 koda : F563-U3-X1