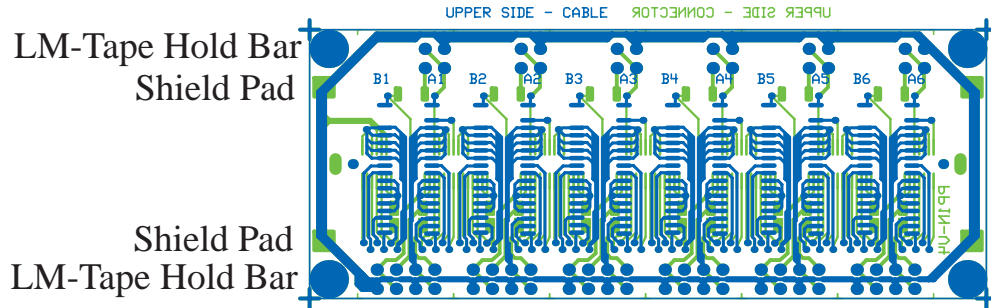


Patch-Panel-1, N+W

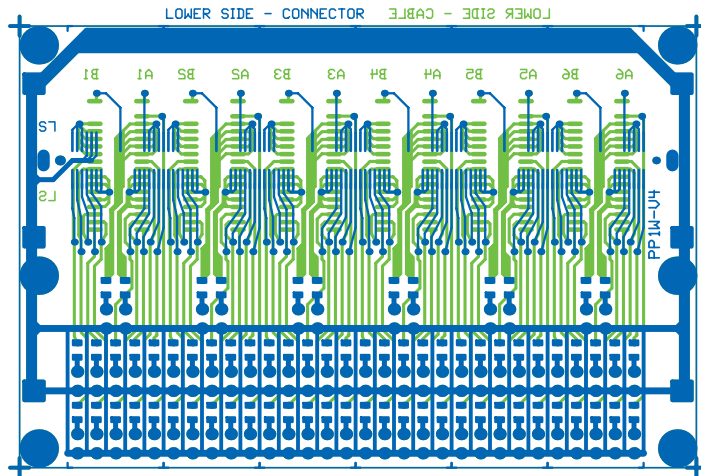
Ver.: 4.0 Date : 2001.01.11.

design : RXon (erik.magan@ijs.si)

size : 90 x 36 mm



LM-Tape Hold Bar  
Shield Pad  
Shield Pad  
LM-Tape Hold Bar



Ground Pad  
Mounting scr.

LM-Tape Hold Bar  
Shield Pad  
Shield Pad  
LM-Tape Hold Bar  
Ground Pad  
Mounting scr.

ZGORNJA STRAN  
DOLNA STRAN  
size : 90 x 59 mm

Note : Due to filtering capacitors \* jumpers requirement, the board size was increased (PP1N from 25 to 36 mm and PP1W from 54 to 59 mm). Free Hold Bar screw holes can be used for additional Mounting screws.