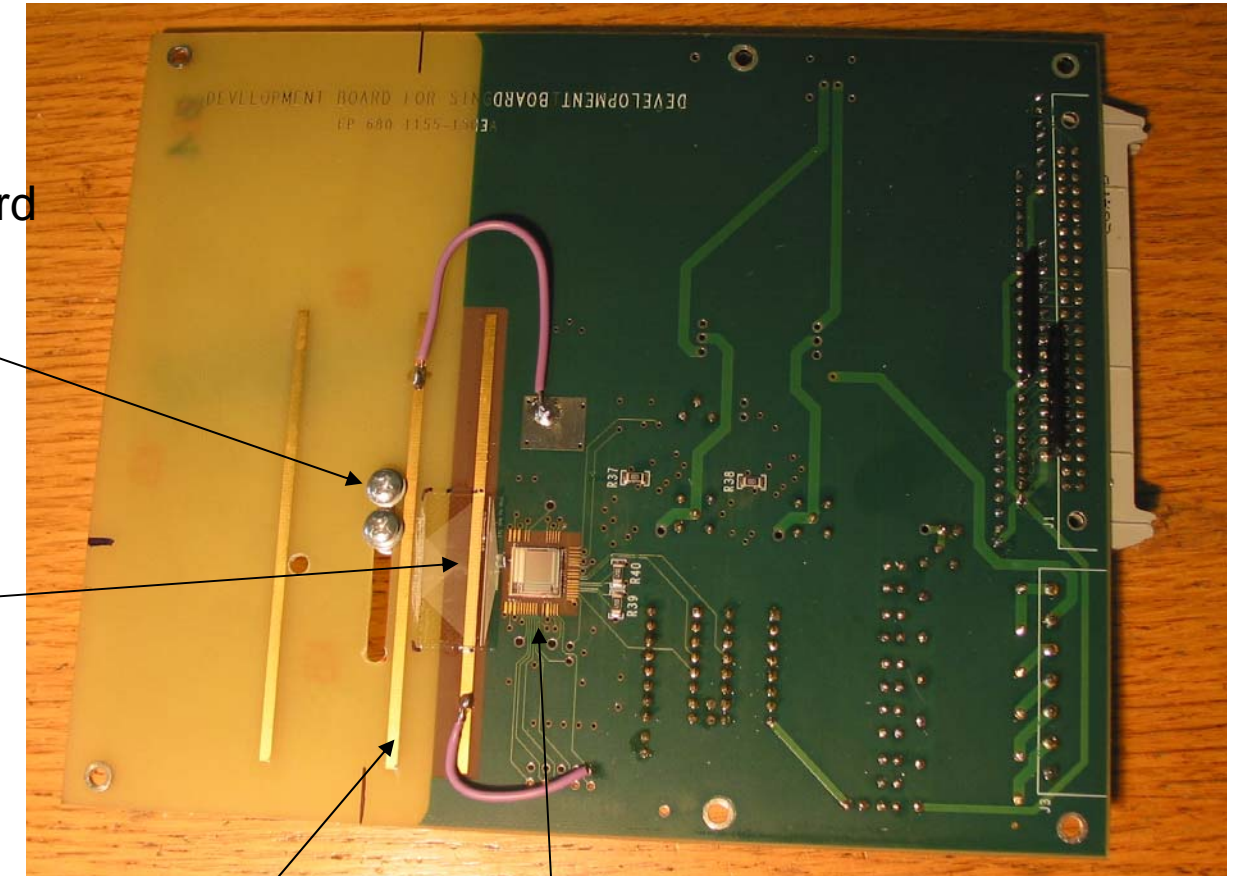


- test board with one SCTA128VG chip (board dimension: 180 mm x 145 mm)

Detector is fixed to the board with M3 screws

Fanins

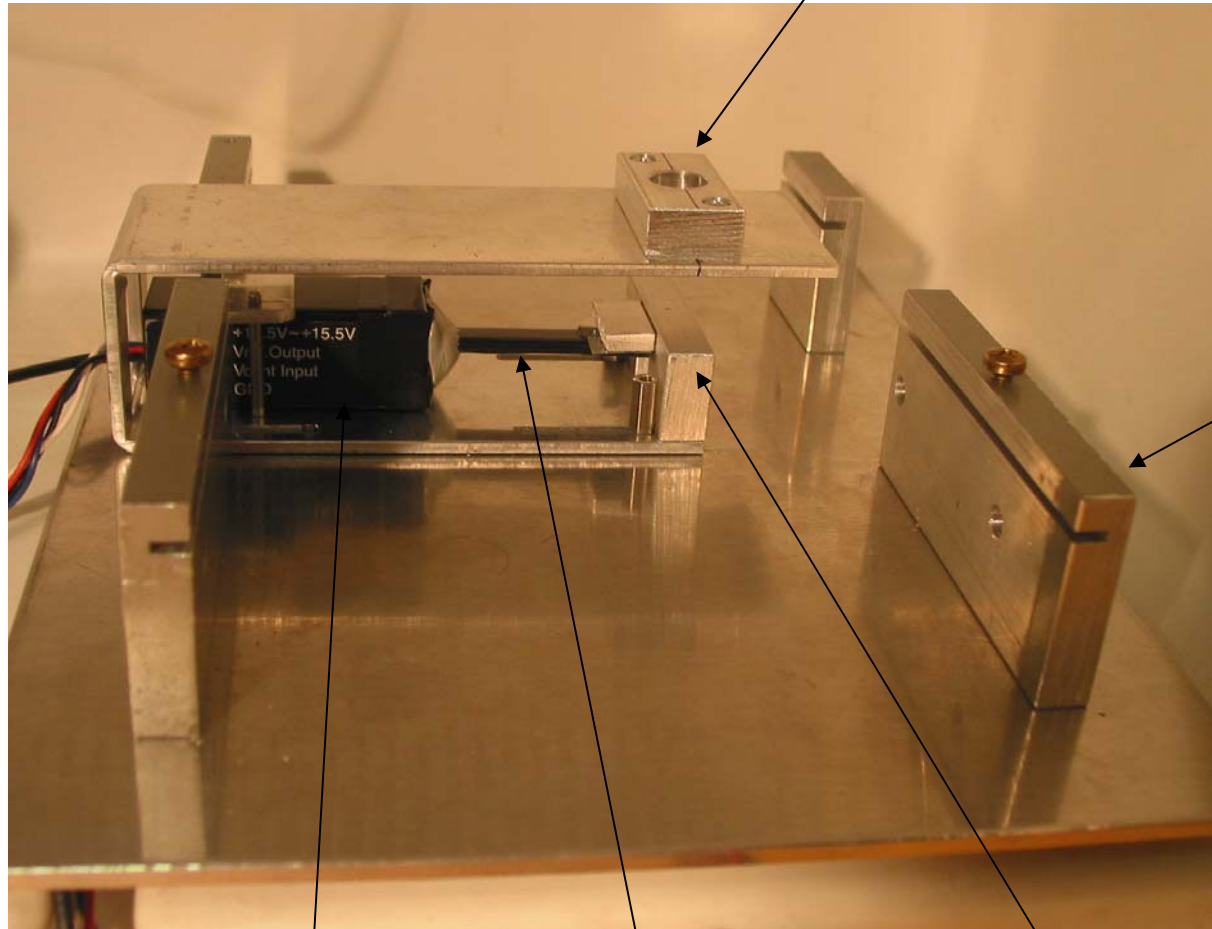


Bias line

SCTA128VG chip

- aluminium support structure
dimensions: ~ 25 cm x 20 cm x 6 cm

Into upper collimator the
 ^{90}Sr source holder is inserted



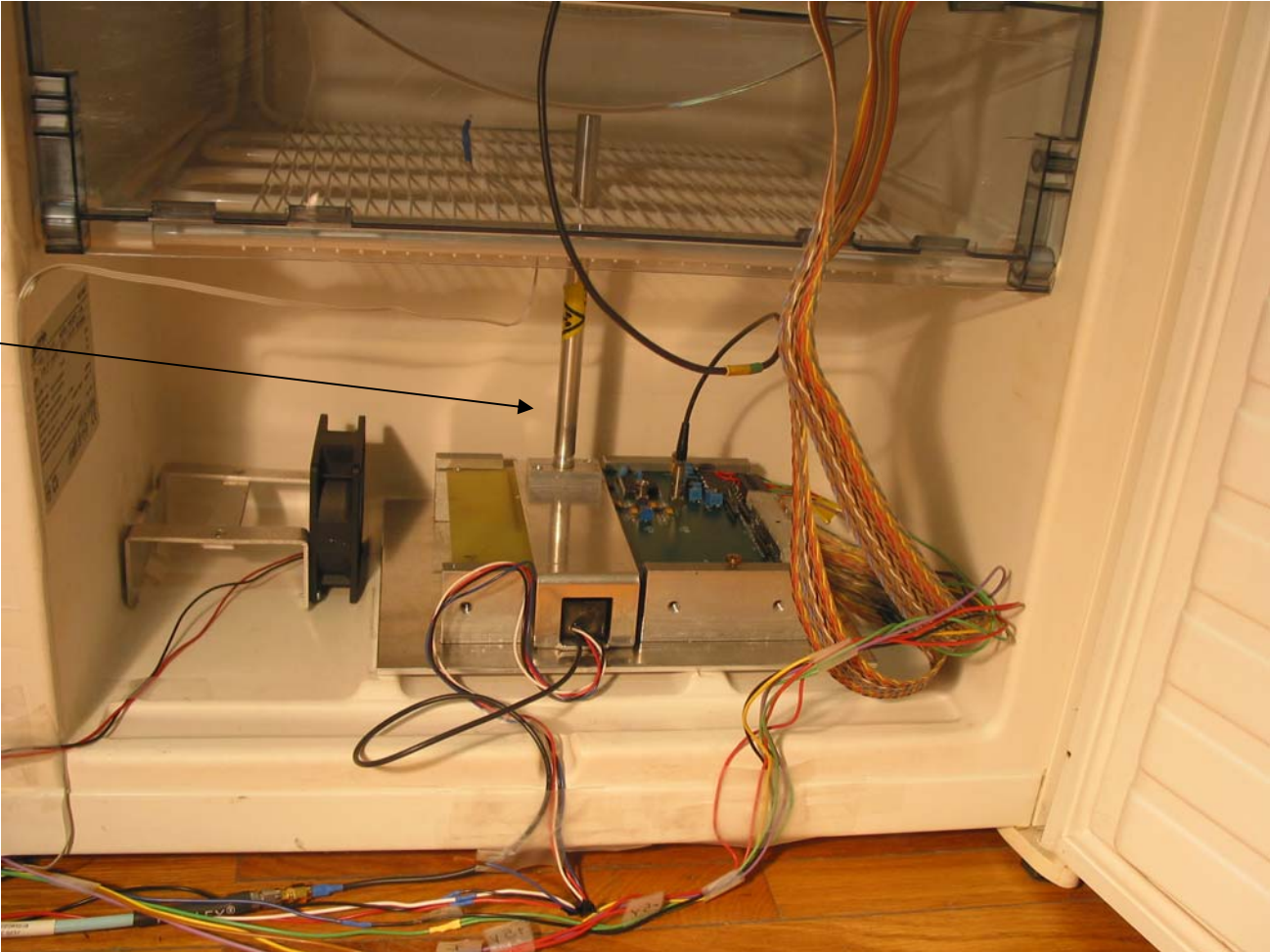
Test board
holder

Photo Multiplier

Light guide

Scintillator is under the
lower collimator

- setup in the fridge



^{90}Sr source holder