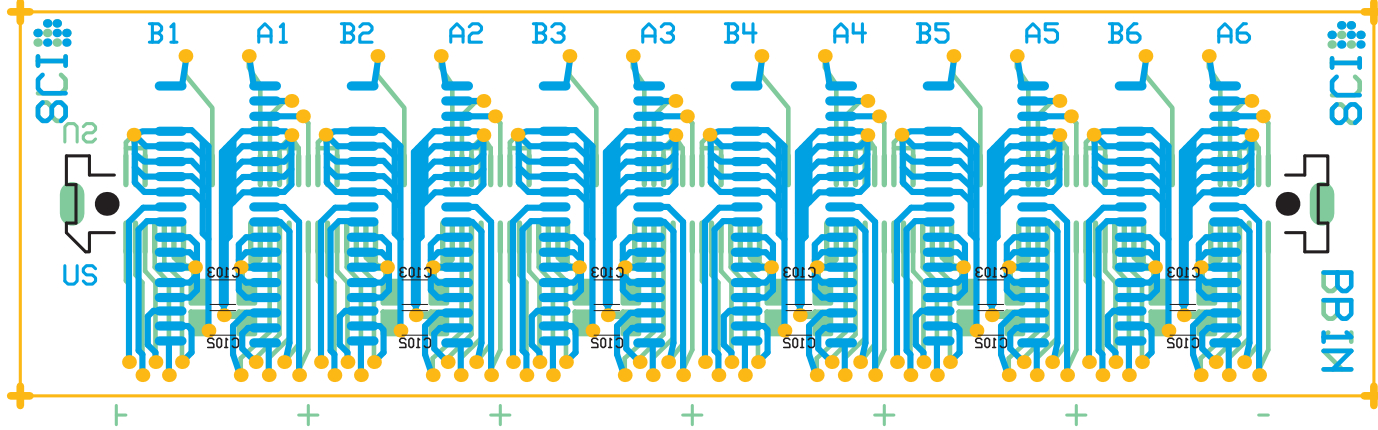


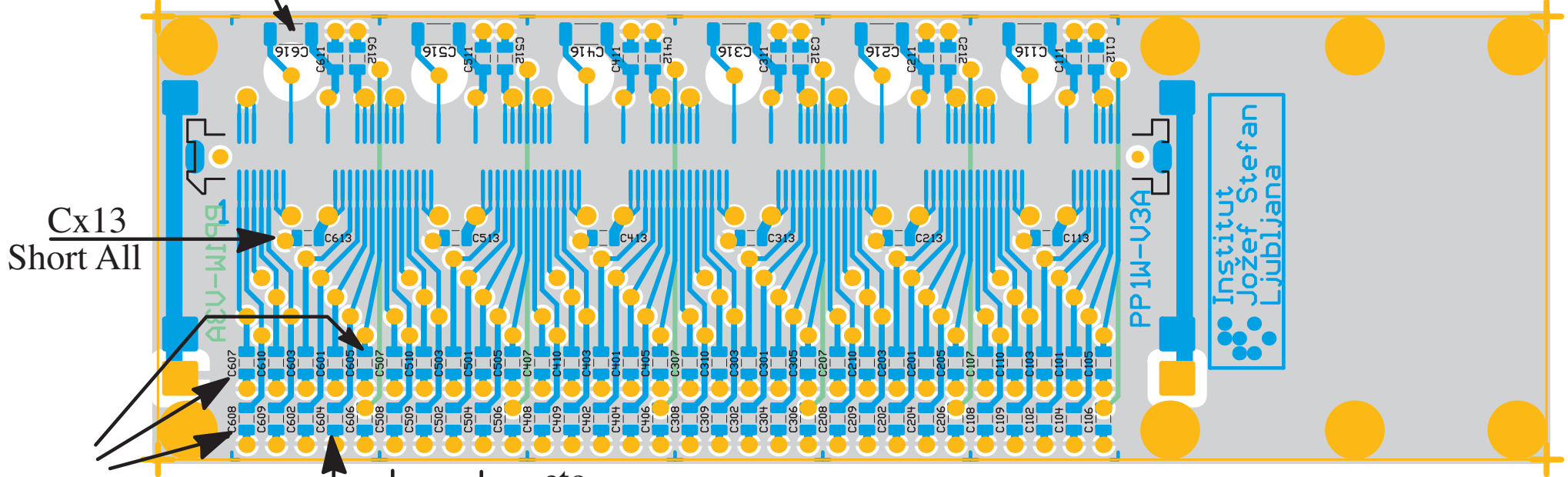
PP1-N-V3 - No change !

UPPER SIDE - CABLE ROTCTOCNOC - EIDIS RPPER



High-Voltage Cx16

PATCH-PANEL-1-W-U3A WIDE - MOLEX CONNECTOR SIDE EIDIS RPPER - CONV.CABLE SOLDER SIDE



Cx13 Short All

Cx04, Cx05
Cx07, Cx08
change all to 0.1uF