

Specifications

Voltage Rating: 150 V AC
 Current Rating: 1.5A
 Operating Temperature Range: -40°C to +105°C
 Withstanding Voltage: 500 V for 1 minute

Materials and Finish

Housing: UL 94V-0 listed
 Terminals: Brass
 Contact Plating: Selective Gold or Gold over Nickel

Features

Pin count from 8 to 60

Part Number (Details)

ZP4 - *** - ** - G*

Series No.

Plastic Height (see table)

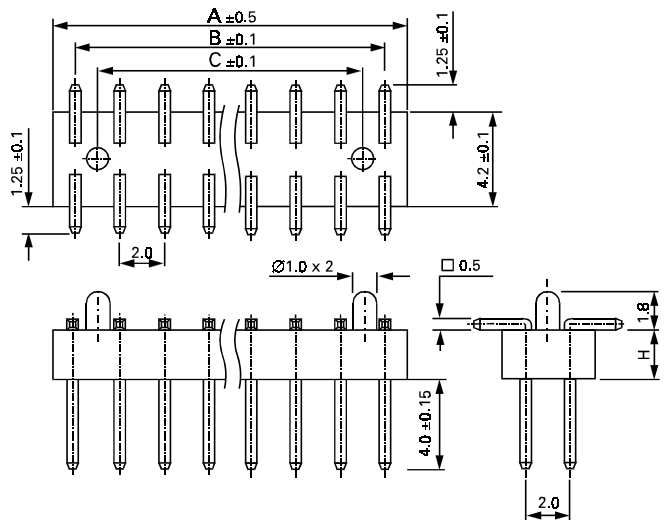
No. of Contact Pins (8 to 60)

Contact Plating:

G2T = Selective Gold
 G3T = 10µ" Selective Gold
 G4T = 15µ" Selective Gold
 G5T = 30µ" Selective Gold
 G2 = Gold Flash
 G3 = 10µ" Gold over Nickel
 G4 = 15µ" Gold over Nickel
 G5 = 30µ" Gold over Nickel

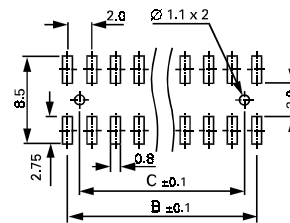
Applicable Dimensions (Reference Only)

Outline Connector Dimensions



Recommended PCB Layout

Top View



Dimensional Information

Part Number	Dim. A	Dim. B	Dim. C
ZP4-***-08-G*	8.0	6.0	4.0
ZP4-***-10-G*	10.0	8.0	6.0
ZP4-***-12-G*	12.0	10.0	8.0
ZP4-***-14-G*	14.0	12.0	10.0
ZP4-***-16-G*	16.0	14.0	12.0
ZP4-***-18-G*	18.0	16.0	14.0
ZP4-***-20-G*	20.0	18.0	16.0
ZP4-***-22-G*	22.0	20.0	18.0
ZP4-***-24-G*	24.0	22.0	20.0
ZP4-***-26-G*	26.0	24.0	22.0
ZP4-***-28-G*	28.0	26.0	24.0
ZP4-***-30-G*	30.0	28.0	26.0
ZP4-***-32-G*	32.0	30.0	28.0
ZP4-***-34-G*	34.0	32.0	30.0
ZP4-***-36-G*	36.0	34.0	32.0
ZP4-***-38-G*	38.0	36.0	34.0
ZP4-***-40-G*	40.0	38.0	36.0
ZP4-***-42-G*	42.0	40.0	38.0
ZP4-***-44-G*	44.0	42.0	40.0
ZP4-***-46-G*	46.0	44.0	42.0
ZP4-***-48-G*	48.0	46.0	44.0
ZP4-***-50-G*	50.0	48.0	46.0
ZP4-***-52-G*	52.0	50.0	48.0
ZP4-***-54-G*	54.0	52.0	50.0
ZP4-***-56-G*	56.0	54.0	52.0
ZP4-***-58-G*	58.0	56.0	54.0
ZP4-***-60-G*	60.0	58.0	56.0

Part Number and Details for Plastic Height

Part Number	Dim. H	Part Number	Dim. H	Part Number	Dim. H
ZP4-080-**-G*	1.5	ZP4-115-**-G*	5.0	ZP4-150-**-G*	8.5
ZP4-085-**-G*	2.0	ZP4-120-**-G*	5.5	ZP4-155-**-G*	9.0
ZP4-090-**-G*	2.5	ZP4-125-**-G*	6.0	ZP4-160-**-G*	9.5
ZP4-095-**-G*	3.0	ZP4-130-**-G*	6.5	ZP4-165-**-G*	10.0
ZP4-100-**-G*	3.5	ZP4-135-**-G*	7.0	ZP4-170-**-G*	10.5
ZP4-105-**-G*	4.0	ZP4-140-**-G*	7.5	ZP4-175-**-G*	11.0
ZP4-110-**-G*	4.5	ZP4-145-**-G*	8.0		