

Specifications

Voltage Rating: 150 V AC
 Current Rating: 1.5A
 Operating Temperature Range: -40°C to +105°C
 Withstanding Voltage: 500 V for 1 minute

Materials and Finish

Housing: UL 94V-0 listed
 Terminals: Phosphor Bronze
 Contact Plating: Selective Gold or Gold over Nickel

Features

Pin count from 4 to 50

Part Number (Details)

ZS5 - ** G*

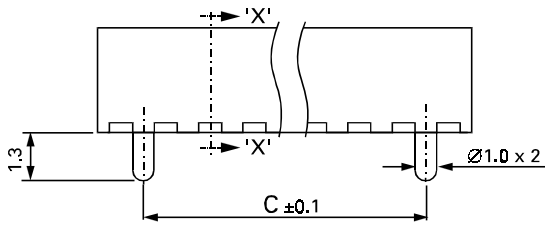
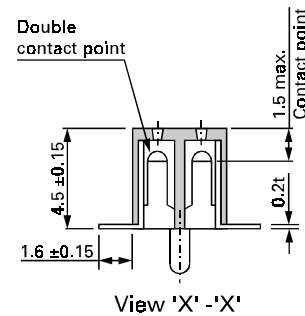
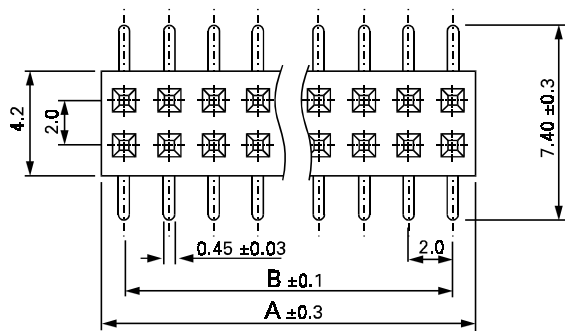
Series No. [Redacted]

No. of Contact Pins (4 to 50) [Redacted]

Contact Plating:
 G2T = Selective Gold
 G3T = 10µ" Selective Gold
 G4T = 15µ" Selective Gold
 G5T = 30µ" Selective Gold
 G2 = Gold Flash
 G3 = 10µ" Gold over Nickel
 G4 = 15µ" Gold over Nickel
 G5 = 30µ" Gold over Nickel

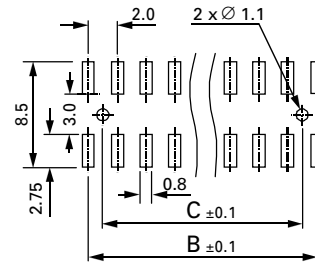
Applicable Dimensions (Reference Only)

Outline Connector Dimensions



Recommended PCB Layout

Top View



Part Number	Dim. A	Dim. B	Dim. C
ZS5-04-G*	4.0	2.0	-
ZS5-06-G*	6.0	4.0	-
ZS5-08-G*	8.0	6.0	4.0
ZS5-10-G*	10.0	8.0	6.0
ZS5-12-G*	12.0	10.0	8.0
ZS5-14-G*	14.0	12.0	10.0
ZS5-16-G*	16.0	14.0	12.0
ZS5-18-G*	18.0	16.0	14.0
ZS5-20-G*	20.0	18.0	16.0
ZS5-22-G*	22.0	20.0	18.0
ZS5-24-G*	24.0	22.0	20.0
ZS5-26-G*	26.0	24.0	22.0

Part Number	Dim. A	Dim. B	Dim. C
ZS5-28-G*	28.0	26.0	24.0
ZS5-30-G*	30.0	28.0	26.0
ZS5-32-G*	32.0	30.0	28.0
ZS5-34-G*	34.0	32.0	30.0
ZS5-36-G*	36.0	34.0	28.0
ZS5-38-G*	38.0	36.0	34.0
ZS5-40-G*	40.0	38.0	36.0
ZS5-42-G*	42.0	40.0	38.0
ZS5-44-G*	44.0	42.0	40.0
ZS5-46-G*	46.0	44.0	42.0
ZS5-48-G*	48.0	46.0	44.0
ZS5-50-G*	50.0	48.0	46.0