

Specifications

Voltage Rating: 150 V AC
 Current Rating: 1.5A
 Operating Temperature Range: -40°C to +105°C
 Withstanding Voltage: 500 V for 1 minute

Materials and Finish

Housing: UL 94V-0 listed
 Terminals: Phosphor Bronze
 Contact Plating: Selective Gold or Gold over Nickel

Features

Pin count from 8 to 60

Part Number (Details)

ZS6 - ** - G*

Series No.

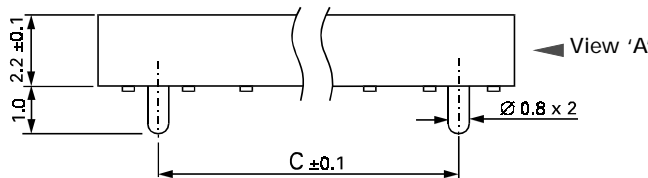
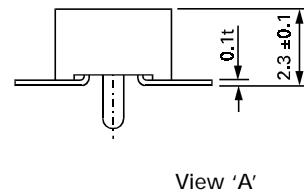
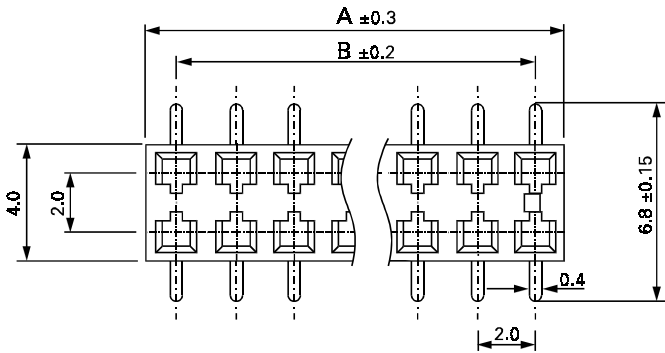
No. of Contact Pins
(8 to 60)

Mating Face Plating:

G2T = Selective Gold
 G3T = 10µ" Selective Gold
 G4T = 15µ" Selective Gold
 G5T = 30µ" Selective Gold
 G2 = Gold Flash
 G3 = 10µ" Gold over Nickel
 G4 = 15µ" Gold over Nickel
 G5 = 30µ" Gold over Nickel

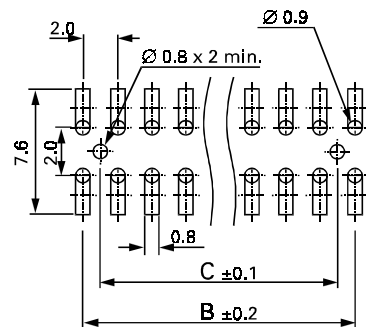
Applicable Dimensions (Reference Only)

Outline Connector Dimensions



Recommended PCB Layout

Top View



Part Number	Dim. A	Dim. B	Dim. C
ZS6-08-G*	8.0	6.0	4.0
ZS6-10-G*	10.0	8.0	6.0
ZS6-12-G*	12.0	10.0	8.0
ZS6-14-G*	14.0	12.0	10.0
ZS6-16-G*	16.0	14.0	12.0
ZS6-20-G*	20.0	18.0	16.0
ZS6-22-G*	22.0	20.0	18.0
ZS6-24-G*	24.0	22.0	20.0
ZS6-26-G*	26.0	24.0	22.0

Part Number	Dim. A	Dim. B	Dim. C
ZS6-30-G*	30.0	28.0	26.0
ZS6-32-G*	32.0	30.0	28.0
ZS6-34-G*	34.0	32.0	30.0
ZS6-36-G*	36.0	34.0	32.0
ZS6-38-G*	40.0	38.0	36.0
ZS6-40-G*	44.0	42.0	40.0
ZS6-50-G*	50.0	48.0	46.0
ZS6-60-G*	60.0	58.0	56.0