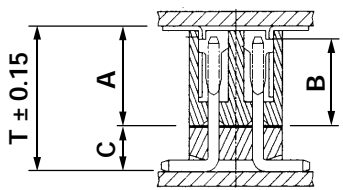


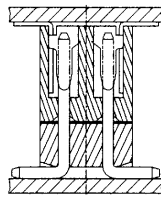
ZS5 / ZP4 (Board -to-Board)

Connection for Various Heights and Pin Counts

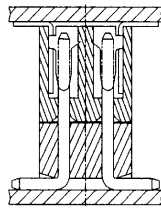
ZS5 Top Connector – Socket



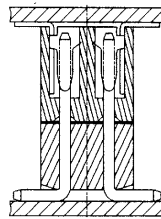
C = 2.0 mm
T = 6.5 mm



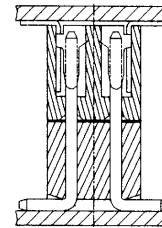
C = 2.5 mm
T = 7.0 mm



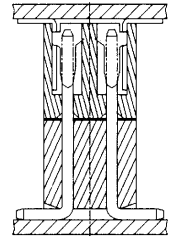
C = 3.0 mm
T = 7.5 mm



C = 3.5 mm
T = 8.0 mm



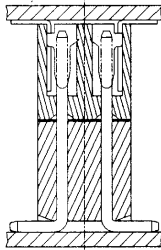
C = 4.0 mm
T = 8.5 mm



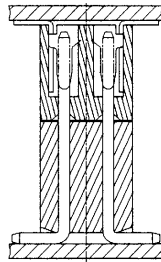
C = 4.5 mm
T = 9.0 mm

ZP4 Bottom Connector – Pin Header

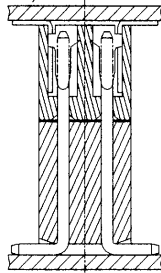
ZS5 Top Connector – Socket



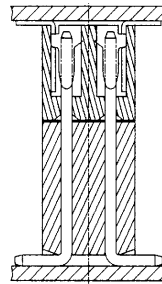
C = 5.0 mm
T = 9.5 mm



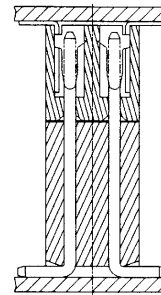
C = 5.5 mm
T = 10.0 mm



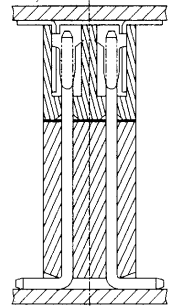
C = 6.0 mm
T = 10.5 mm



C = 6.5 mm
T = 11.0 mm



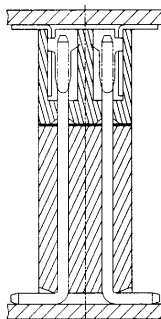
C = 7.0 mm
T = 11.5 mm



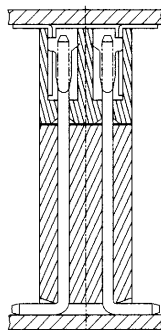
C = 7.5 mm
T = 12.0 mm

ZP4 Bottom Connector – Pin Header

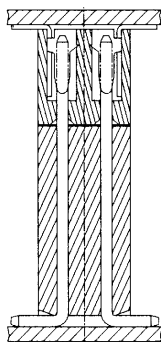
ZS5 Top Connector – Socket



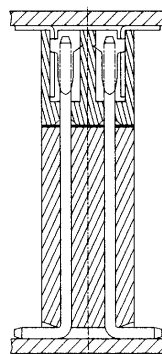
C = 8.0 mm
T = 12.5 mm



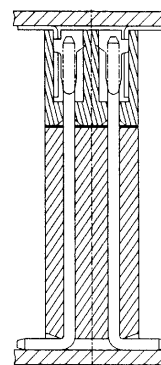
C = 8.5 mm
T = 13.0 mm



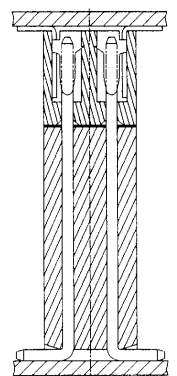
C = 9.0 mm
T = 13.5 mm



C = 9.5 mm
T = 14.0 mm



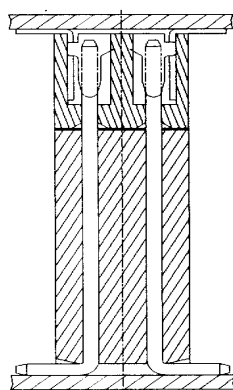
C = 10.0 mm
T = 14.5 mm



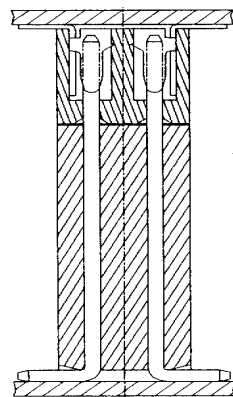
C = 10.5 mm
T = 15.0 mm

ZP4 Bottom Connector – Pin Header

ZS5 Top Connector – Socket



C = 11.0 mm
T = 15.5 mm



C = 11.5 mm
T = 16.0 mm

ZP4 Bottom Connector – Pin Header

Information:

Dimension 'A' = 4.50 mm
Dimension 'B' = 4.00 mm
These dimensions remain constant for the socket
ZS5

Dimension 'C' = Height
These dimensions vary from 2.0 mm to 12.0 mm for the pin header
ZP4

Total height = 'T' ±0.15